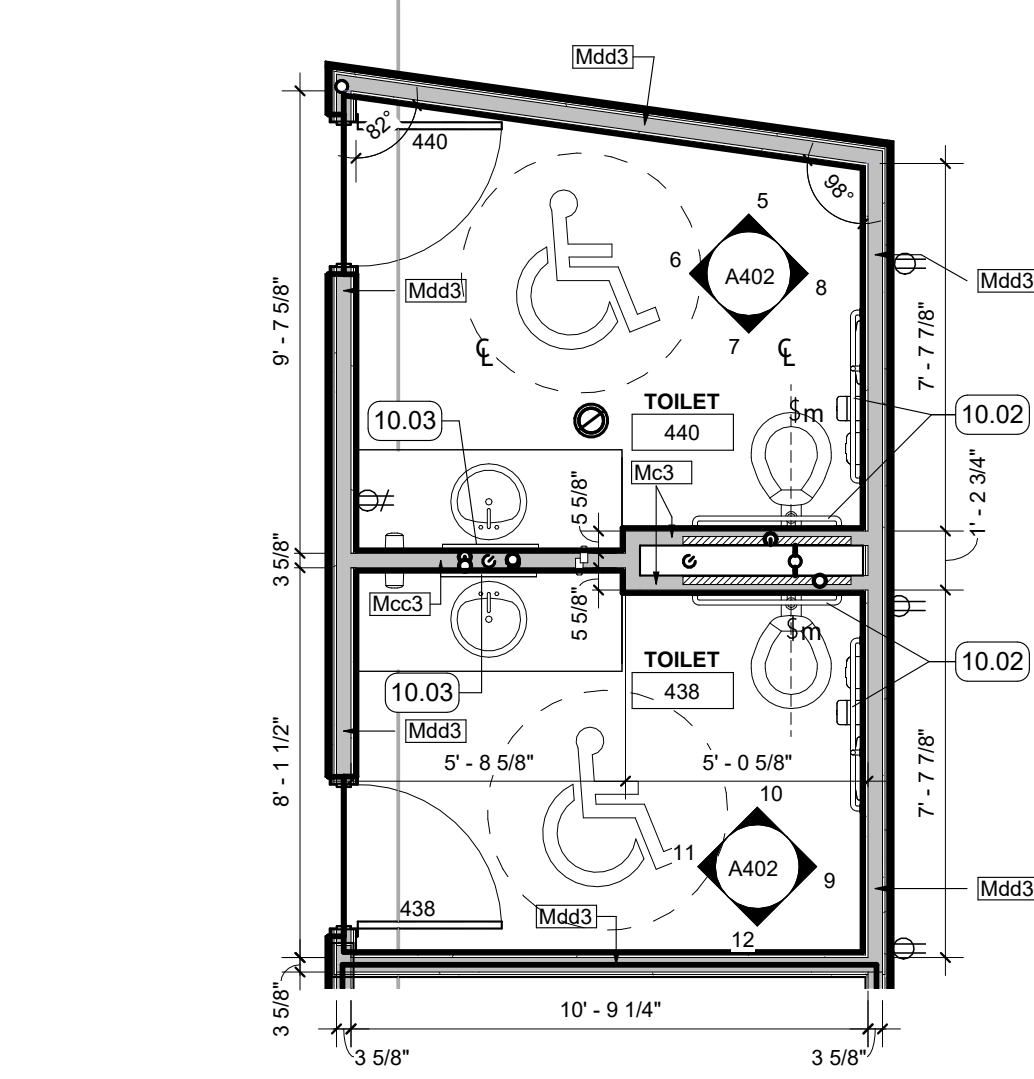
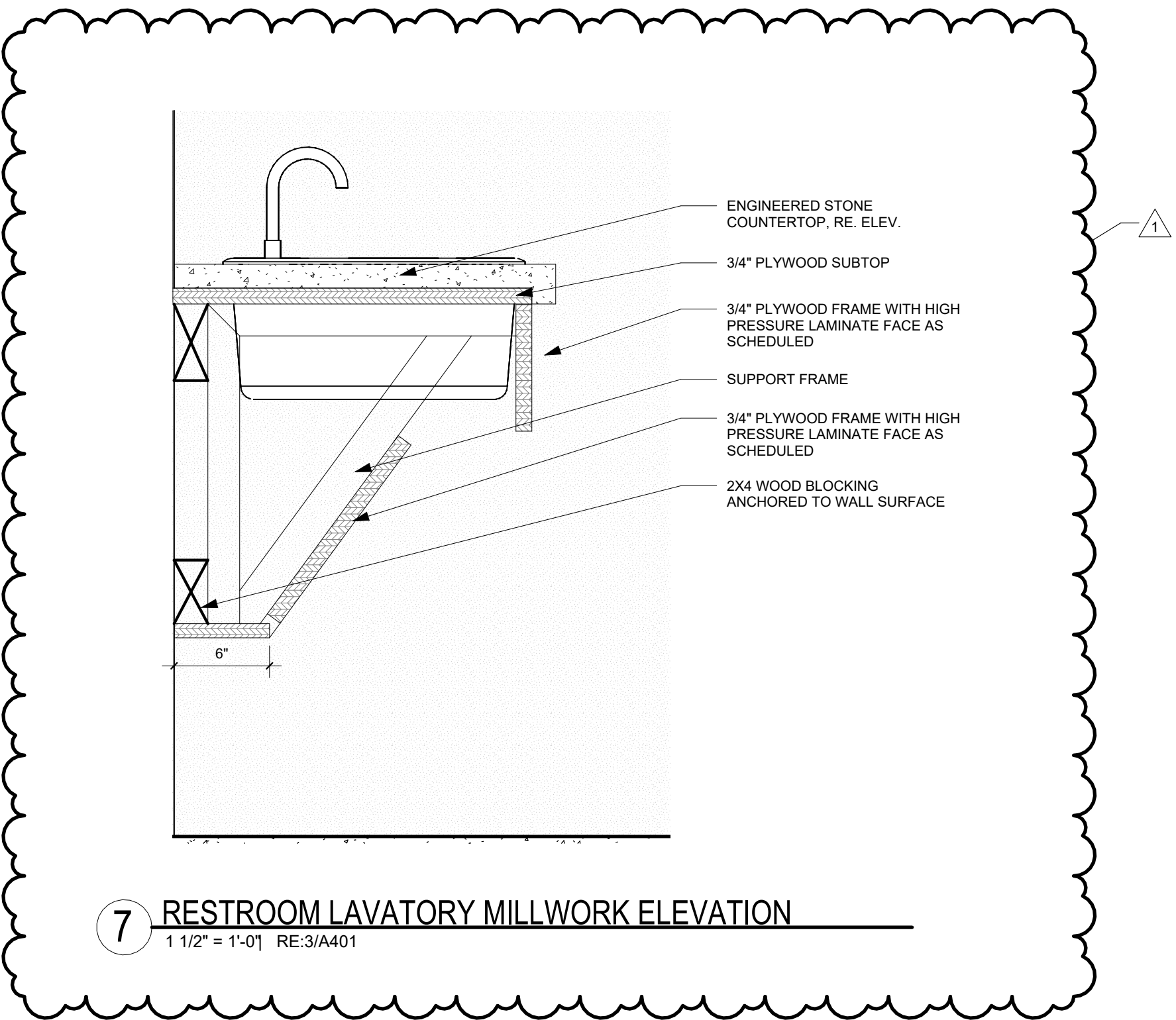
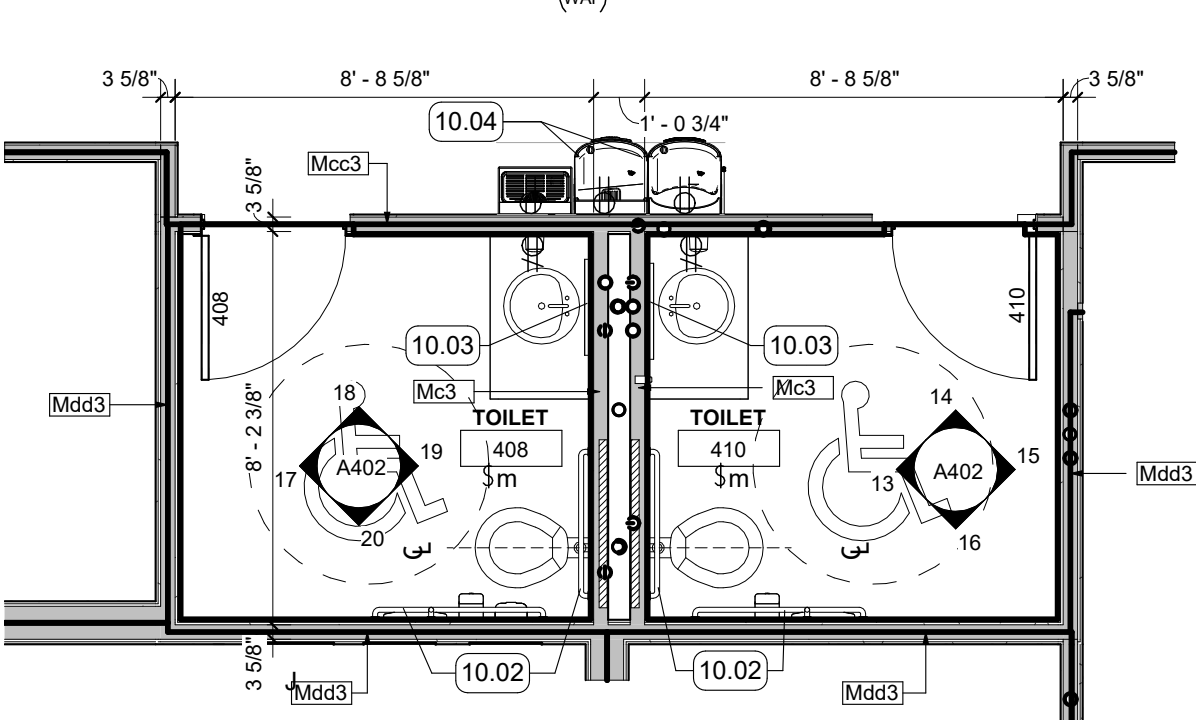


RESTROOM ACCESSORY SCHEDULE		
MARK	DESCRIPTION	COMMENTS
CH1	COAT HOOK	
GB2	GRAB BAR- HORIZONTAL- 36"	
GB3	GRAB BAR- HORIZONTAL- 42"	
GB5	GRAB BAR- VERTICAL- 18"	
ND1	SANITARY NAPKIN DISPOSAL	
SC1	SEAT COVER DISPENSER	
TP3	TP DISPENSER	
US1	URINAL SCREEN	

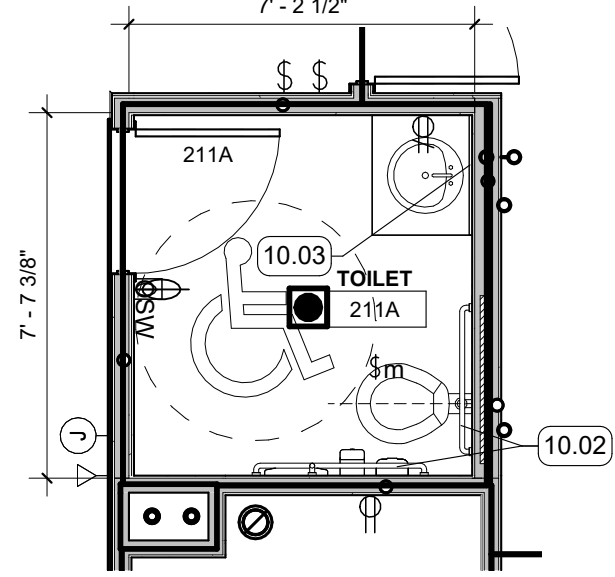
- KEYNOTES
- 10.01 WALL-MOUNTED TOILET PARTITIONS, PROVIDE BLOCKING AS REQD.
 - 10.02 GRAB BARS, PROVIDE BLOCKING IN WALL ELEVATIONS
 - 10.03 MIRROR, SIZE SHOWN IN INTERIOR ELEVATIONS
 - 10.04 ADA-COMPLIANT WATER COOLER / BOTTLE FILLER, SEE PLUMB



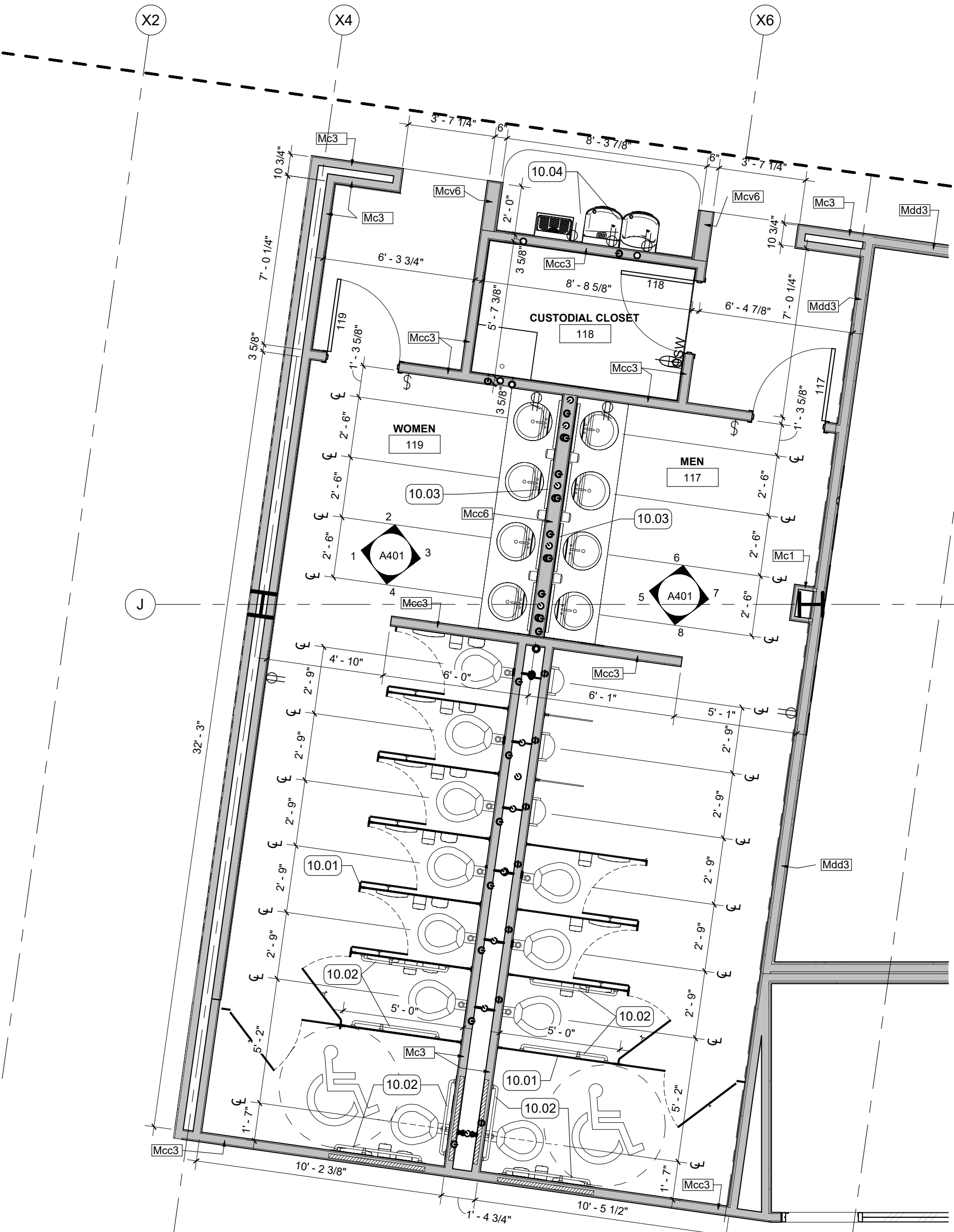
4 ENLARGED RESTROOM PLAN - 438, 440
1/4" = 1'-0" | RE:1/A104



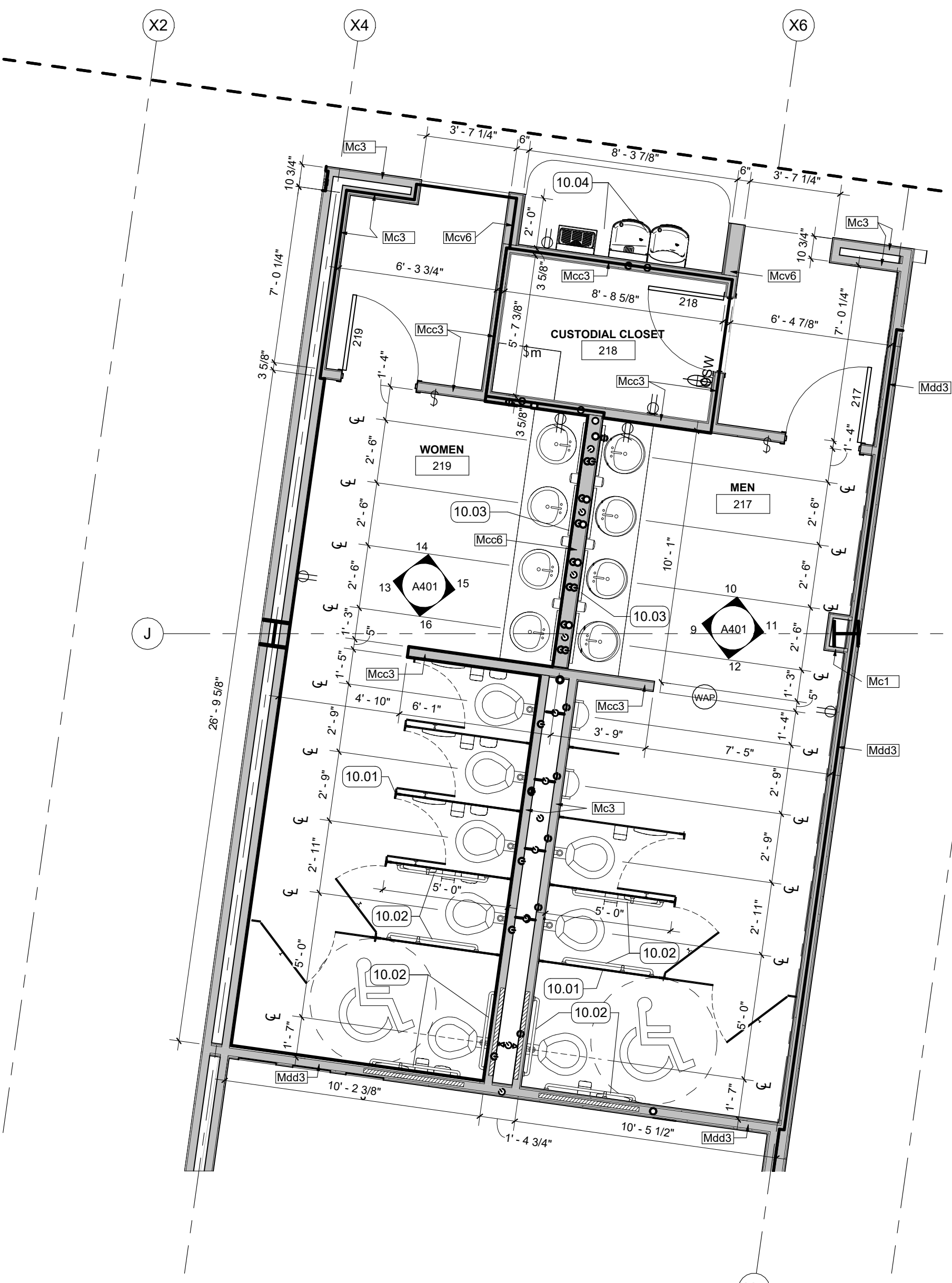
5 ENLARGED RESTROOM PLAN - 408, 410
1/4" = 1'-0" | RE:1/A104



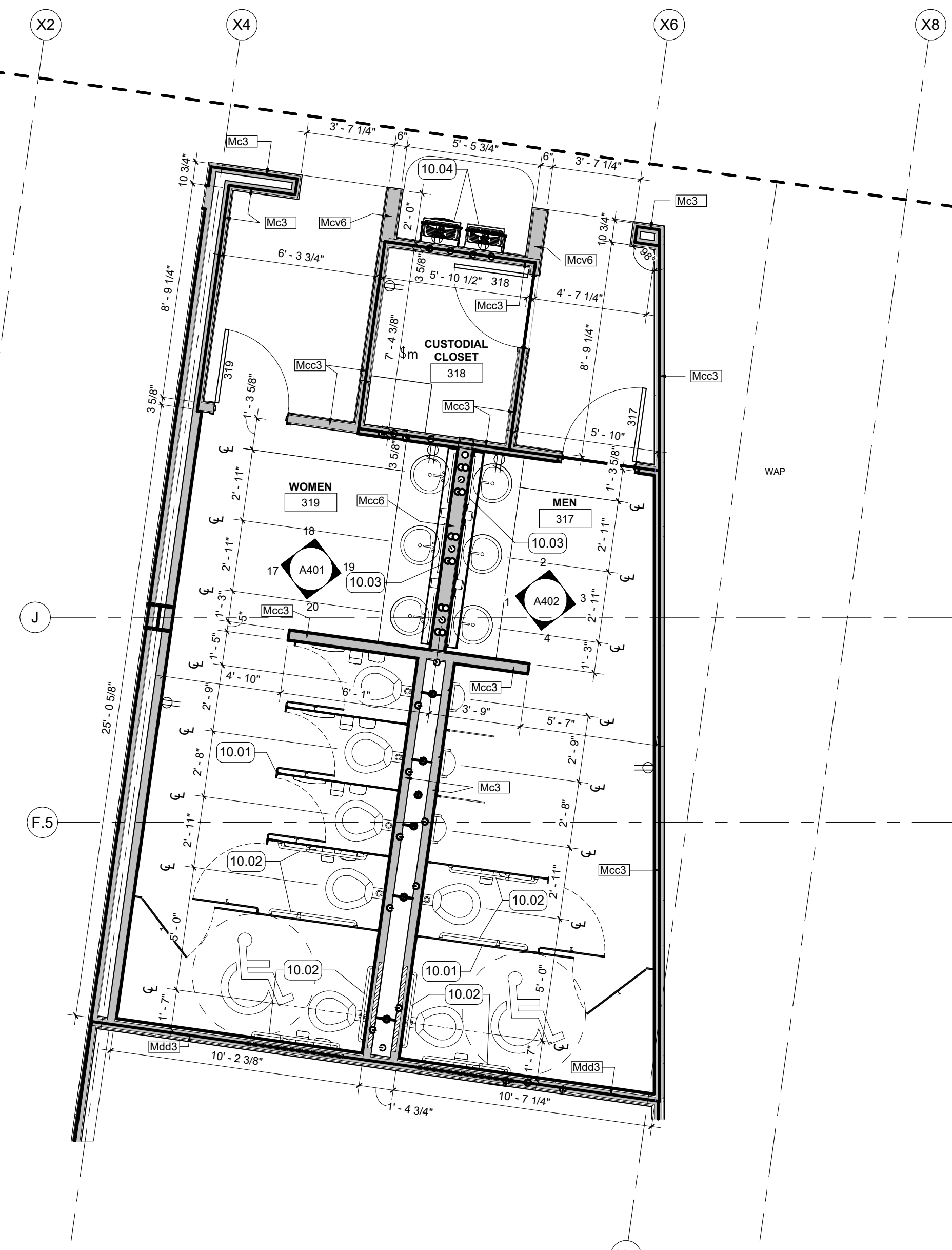
6 ENLARGED RESTROOM PLAN - 211A
1/4" = 1'-0" | RE:1/A102



1 ENLARGED RESTROOM PLAN - 117, 118, 119
1/4" = 1'-0" | RE:1/A101



2 ENLARGED RESTROOM PLAN - 217, 218, 219
1/4" = 1'-0" | RE:1/A102



3 ENLARGED RESTROOM PLAN - MAIN 317, 318, 319
1/4" = 1'-0" | RE:1/A103